



INFONICS TECHNOLOGIES GLOBAL PVT. LTD

A Leading LED Display
Board Manufacturer in India



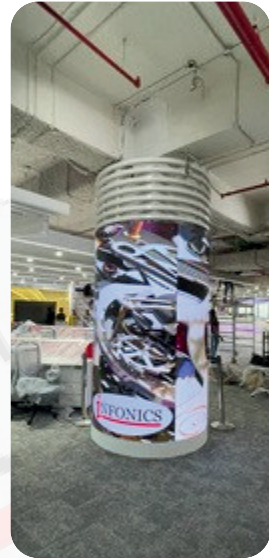
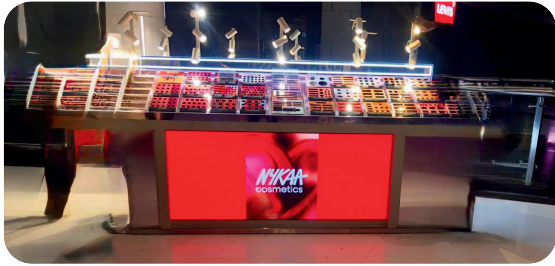
ABOUT THE COMPANY

Infonics is a leading manufacturer of LED video walls, offering innovative solutions for businesses, events, and advertising. With a focus on quality and customer satisfaction, we have established a strong reputation in the digital display industry. Our products deliver superior image quality, brightness, and durability, making them ideal for various applications.

In addition to LED video walls, we also provide advanced digital signage and interactive panels, ensuring complete display solutions tailored to modern needs.

- 20+ years Experience
- 2000+ Installations
- 200+ Satisfied Clients
- Superior Quality Products
- Immediate Service Support
- Warranty & Maintenance
- Competitive Pricing
- Professional Installation & Training

ABOUT THE WORKS



OUR CLIENTS





FINE PITCH SERIES

Parameters Model	IN-X	IN-X2	IN-X5	IN-X8
PixelPitch	0.9mm	1.25mm	1.53mm	1.83mm
Brightness	≥ 500-600cd/m2			
ColourTemp	2000K-9500K Adjustable			
Cabinet Material	Die-Cast Al/MS Cabinet			
Viewing Angle	160°/140°			
Maintenance	Front/Rear			
Contrast Ratio	≥ 5000:1			
Refresh Rate	1920Hz/ 3840Hz			
Operating Temp Humidity	-10°C to 45°C/10%-80%RH			
Storage Temp Humidity	-20°C to 55°C/10%-85%RH			



INDOOR SERIES

Parameters Model	INII-2X0	INII-2X5	INII-3X0	INII-4X0
PixelPitch	2mm	2.5mm	3.0mm	4.0mm
Brightness	≥ 600-800cd/m2			
ColourTemp	2000K-9500K Adjustable			
Cabinet Material	Die-Cast Al/MS Cabinet			
Viewing Angle	160°/140°			
Maintenance	Front/Rear			
Contrast Ratio	≥ 5000:1			
Refresh Rate	1920Hz/ 3840Hz			
Operating Temp Humidity	-10°C to 45°C/10%-80%RH			
Storage Temp Humidity	-20°C to 55°C/10%-85%RH			



ALL-IN-ONE SERIES

Parameters Model	INO-2X5	INO-3X0	INO-4X0	INO- 6X0	INO-8X0	INO-XX0
PixelPitch	2.5mm	3.0mm	4.0mm	6.0mm	8.0mm	10mm
Brightness	5000-7000cd/m2					
ColourTemp	2000K-9500K Adjustable					
Cabinet Material	Cabinet/ Die-Cast Al/Aluminum Profile Cabinet					
Viewing Angle	140°/140°					
Maintenance	Front/Rear					
Contrast Ratio	≥ 4000:1					
Refresh Rate	1920Hz/3840Hz					
Operating Temp Humidity	-10°C to 50°C/10%-90%RH					
Storage Temp Humidity	-10°C to 50°C/10%-90%RH					



OUTDOOR SERIES

Parameters Model	INO-2X5	INO-3X0	INO-4X0	INO- 6X0	INO-8X0	INO-XX0
PixelPitch	2.5mm	3.0mm	4.0mm	6.0mm	8.0mm	10mm
Brightness	5000-7000cd/m2					
ColourTemp	2000K-9500K Adjustable					
Cabinet Material	Cabinet/ Die-Cast Al/Aluminum Profile Cabinet					
Viewing Angle	140°/140°					
Maintenance	Front/Rear					
Contrast Ratio	≥4000:1					
Refresh Rate	1920Hz/3840Hz					
Operating Temp Humidity	-10°C to 50°C/10%-90%RH					
Storage Temp Humidity	-10°C to 50°C/10%-90%RH					



EVENT LED DISPLAY SERIES

Product Model	BL-IN-3.8	BL-IN-4.8
Environment	Outdoor	Outdoor
Pixel Pitch (mm)	3.8	4.8
Cabinet Size (H x W)	576 x 576 mm	576 x 576 mm
Resolution (H x W)	150 x 150	120 x 120
Cabinet Weight (kg)	9	9
Scan	15s	10s
Module Size (H x W)	288 x 288 mm	288 x 288 mm
Module Resolution (H x W)	75 x 75	60 x 60
LED Lamps	SMD 1921	
Refresh Rate	3840Hz	
Brightness	4500-6000 cd/ m ²	
Cabinet Material	Die-Cast Al	
Hub	Hub75	
Connector	With power and signal connector	
Flight Case	6in1	





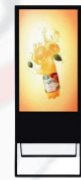



INTERACTIVE PANEL

Sizes - 55", 65", 75", 86", 98"

Specification	Type	Parameter
Display	Resolution	4K(3840*2160) UHD
	Colour	1.07B (8 BITS)
	Contrast Ratio	5000:1
	Brightness	350-400 CD/M2
	View Angle	H:178, V:178
	Aspect Ratio	16:09
	Backlight Type	D-LED
	Backlight Life	>50000 Hours
System	Mainboard	V100
	System Version	Android 14.0
	CPU	Arm Cortex-A55*8, OCTA- Core
	GPU	Mali-G52 MP
	RAM	8GB DDR4
	ROM	128GB EMMC
Touch	Touch Type	High Precision Infrared Touch
	Number of Touch	20 Points (Android)/ 40 Points (Window)
	Number of Object	Finger, Touch Pen, 3mm Non Transparent Object
	Response Time	<4MS
	Touch Resolution	32767*32767
	Touch Precision	Plus/Minus MM
	Support System	Window, Android, Mac OS
Interface	Front Ports	USB 2.0*3/ HDMI*1/ Touch USB-B*1/ Type-C*1
	Rear Ports	RJ45/ LAN*2/ Touch USB*1/ HDMI*2/ USB 3.0*2/ VGA*1/ PC Audio*1/ Type-C*1/ Display Port*1/ Optical Out*1/ HDMIOUT*1/ (Mini) Line*1
Product	Front Frame Glass	Physical Tempered Grade 7 Explosion Proof 8MM Glass with Anti Glare Coating
	Power	220W (Excluding OPS, Supporting OPS Power 100W)
	Standby Power	<0.5W
	Audio	Stereo Sound Effects 25W*2
	Input Voltage	AC 100-240V-50/60H
	Camera (Optional)*	48 Mega Pixel With 8 Array Mic
Accessories	Remote, Power Cable, Touch Pen*2, WiFi/4G Antenna, Wall Mount, Pointer	

DIGITAL SIGNAGE

Sizes - 27" to 55"

TYPE OF SIGNAGE	FEATURES	
Floor Standee	32" TO 55"	
	Touch/Non Touch	
	Android 14	
A-Frame	32" TO 55"	
	Touch/Non Touch	
	Android 14	
Easel Standee	32"	
	Non Touch	
	Android 14	
Digital Screen	27" TO 55"	
	Wall Mount	
	Non Touch	
	Android OS	
Table Top	10" TO 22"	
	Touch/Non Touch	
	Android 14	
Podium	27"	
	Touch	
	Android 14	

Head Office

C-36, Sector 88, Phase 2,
Phase-2, BPL, Noida, Gautam Buddha Nagar,
Uttar Pradesh, India, 201304

Manufacturing Unit

C-25, Sector 88, Phase 2,
Phase-2, BPL, Noida, Gautam Buddha Nagar,
Uttar Pradesh, India, 201304

Service Centre

Mumbai E6, Unit-114, Bhumi World,
Pimpals Village, Nashik Bypass Road,
Bhiwandi Taluka, Thane- 421302

Toll-Free Number: 1800 891 2650

Contacts Us

Website

www.infonicstech.com

Email

info@infonicstech.com
sales@infonicstech.com

Phone

+91 88827 18149
+91 78274 48967